



# Beth El Ner Tamid Synagogue

Volume 73 Issue 2

Tishri 5772 Cheshvan

October 2011



## Rabbi's Message By Rabbi Tamar Crystal



As our world gets more mechanized I value *Sukkot* more and more.

I was thinking the other day how free our ancestors must have felt. *Sukkot* was originally an agricultural festival, an outpouring of energy directed into formal thanks to the Creator of the universe for the harvest that was finally over and done. What I was thinking of was twofold. One, thanks to our 24/7 instant messaging constant contact CNN twittering world, I can't remember the last time I experienced the relief that something, anything, was so completely over and done that I was free to enjoy myself without another deadline looming. And the other thing I was thinking about is how completely divorced I feel from the cycle of nature, let alone any cycle that produces the food I eat. Don't get me wrong. I love technology. I am not sure I could survive without air conditioning in summer and heat in winter. And my friends will tell you I could not survive without 3G and Wi-Fi or takeout.

But all these modern conveniences come at a cost for me. And that cost is a blurring of seasons and a detachment from the natural progression of the year. In some way I feel that this diminishes my sense of wonder at the miracle of life. If food comes as easily as it does, if heat and cold are merely inconveniences to be overcome with electricity (or even night and day become inconveniences to be overcome with electricity), if my sense of my work is that it is never-ending (however meaningful I feel it is), then I am losing something very important. Which is why I need to make *Sukkot* the most important thing I do this autumn.

In Judaism we can "*m'hadash*", renew or make fresh, our lives each day. We say in the first blessing before the "*Shma*" in *Shaharit*, the Morning Prayer service, "God, in God's goodness, renews creation every day." From this we learn that we, in imitation of God, have the capability, to take a sharp look at what we have and what we lack and refresh our perspective. The holiday of *Sukkot* can be exactly one of those "aha" moments which can help me look at the disconnect I feel from the rhythm of time. I can use the eight days to re-ground myself in the roots of my tradition and the wisdom of my ancestors so that my life is wider than the narrowband medium I have made it.

Rabbi's Message continued next column

## IN THIS ISSUE...

President's Message .....	Page 2
Voice of the Men's Club .....	Page 3
Men's Club Paid-Up Membership Dinner.....	Page 3
Voice of the Sisterhood.....	Page 4
Sisterhood Paid-Up Membership Luncheon ..	Page 4
Donna's Book Review .....	Page 5
Fall/Winter Clothing Drive .....	Page 5
Yoga Classes .....	Page 5
Family Education Center News .....	Page 6
Fun Run/Walk.....	Page 6
Wish List For Beth El.....	Page 6
Blessing of the Animals Ceremony.....	Page 6
Men's Club Tailgate Party Photos .....	Page 7
Flu Shot Clinic.....	Page 7
Advertise With Beth El .....	Page 7
Tree of Life Dedication .....	Page 7
Friday Night Shabbat Dinner .....	Page 7
Birthdays & Anniversaries.....	Page 8
Yahrzeits & In Memoriam .....	Page 9
Fund Cards.....	Page 9
High Holy Days Schedule .....	Page 10
October Calendar.....	Page 11
Beth El Picture Gallery .....	Page 12

## Beth El Minyan/Service Schedule

Monday Minyan.....	7:30 am
Thursday Minyan .....	7:30 am
Friday Minyan .....	7:30 am
Saturday Shabbat Service & Yom Tov .....	9:30 am
Secular Holidays .....	9:00 am

If you require a special Minyan, please notify the Beth El office at (262) 242-6900. Please contact your friends and family to help ensure a Minyan and give our office sufficient time to make the arrangements.

Rabbi's Message continued

I invite you to join me in seeing *Sukkot* anew. And I invite you to join me in reconnecting to the joy of waving the *lulav* and the *etrog*, feeling the freedom of wonder that nature engenders. Together we can build that joy over the eight days of *Sukkot* until we come into *Simchat Torah* ready to take the Torah, the Tree of Life, the ultimate symbol of our roots in both nature and tradition, into a new year with a new view and a reactivated enthusiasm.

Rabbi Tamar Crystal

## President's Message

By Robert Peterman



I was at a stop light last week and a lady pulled up along side me and asked me what my license plate meant. I said it meant "from Generation to Generation. Her facial expression conveyed "that's interesting". I told her it was Hebrew and her head nodded as if to say I think I understand. When I say L'dor v'dor, what does it mean to you?----We're in Deuteronomy, the last book, the recapitulation. As I was writing this midrash, I reflected on the words from generation to generation and what it meant to me. Moshe Rabeinu receiving the Ten Commandments at Mt. Sinai. The first commandment is "I am the Lord your G-d who brought you out of the land of Egypt, the house of bondage." Why at this point G-d brought us out, I feel implicit in the first commandment, is to receive the rest of the commandments. This action moves us from being Hebrews which means from the other side of the river to becoming Jews and the people of the book.

And now Moses speaks to the Jewish nation as though he was a parent, repeating to his "children" that which is important. Think about the mental pain he must have been experiencing at that moment. He knows that regardless of all of the trials and tribulations that he has gone through the last 40 years, he will never see the promised land and he will die at 120. Using the phrase "the promised land" metaphorically, how many people do we know who have been struck down long before their time was due knowing that they will never witness another family simcha. Succession takes place and Moses must pass on the leadership to Joshua. Why would G-d pass such harsh judgment upon him for the act of striking a rock with his staff rather than speaking to it to receive water?

In the eyes of our G-d, we are all treated equally. If you disobey G-d's commandments you have a penalty to pay. And certainly this very concept is embodied in our own law of the land. In the eyes of our own law no one is above it.

So as I thought it would be appropriate to list some of the important facts that we Jews have contributed to the world and why it's imperative to tell it from one generation to the next generation:

- The greatest gift we have given to the world is Hashem, monotheism. As far as I know Judaism is the only religion that believes in a supreme power. All others rely on idols, mortals and/or inanimate objects.
- We gave the world laws of conduct and behavior contained in 613 mitzvot.
- Torah is a narrative of patriarchs and matriarchs, in every day situations that we can relate to. Torah does not focus on one person, but gives us solutions to problems we incurred every single day via the biblical characters.
- On a more contemporary level I was intrigued by an article written by Charles Murray, in April 2007,

*President's Message next column*

## BULLETIN

Published Monthly From

September to June by

**BETH EL NER TAMID SYNAGOGUE**

2909 West Mequon Road, Mequon, WI 53092

An Independent Progressive Conservative Synagogue

Tamar Crystal ..... Rabbi  
 Robert Peterman ..... President  
 Neal Plotkin & Rodney Ugent ..... Men's Club Co-Presidents  
 Phyllis Wiggins..... Sisterhood President  
 Debbie Intravaia..... Religious School Director  
 Donna Brown ..... Executive Director  
 Enid Bootzin-Berkovits..... Choir Director  
 Maggi Treager..... Librarian  
 Judy Taylor ..... Administrative Assistant

### Synagogue and School Office

Phone: (262) 242-6900 ~ Fax: (262) 242-3952

Beth El's Web Site: [www.bethelnertamid.org](http://www.bethelnertamid.org)

#### E-Mail Addresses:

General Synagogue Address.....[info@bethelnertamid.org](mailto:info@bethelnertamid.org)  
 Rabbi Tamar Crystal.....[rabbicrystal@bethelnertamid.org](mailto:rabbicrystal@bethelnertamid.org)  
 Debbie Intravaia.....[education@bethelnertamid.org](mailto:education@bethelnertamid.org)  
 Donna Brown .....[executivedirector@bethelnertamid.org](mailto:executivedirector@bethelnertamid.org)  
 Judy Taylor .....[adminassistant@bethelnertamid.org](mailto:adminassistant@bethelnertamid.org)

**Do you need to communicate directly to our Board of Trustees? They can be reached at:**  
[board-of-trustees@bethelnertamid.org](mailto:board-of-trustees@bethelnertamid.org)

### CONTACT RABBI TAMAR CRYSTAL

Rabbi is available 24/7 for sudden illness or emergency events at **(262) 227-7087**. For non-emergency situations please feel free to call her during business hours, e-mail or contact the synagogue office and leave a message.

### CONTACT INFORMATION FOR:

#### Memorial Plaque and Tree of Life Information

Fred Meyer ~ (414) 351-4556

#### To Sponsor a Kiddush

Donna Brown ~ (262) 242-6900

*Presidents Message continued*

documenting what Jews have contributed to humanity.

So when that woman asked me what L'dor v'dor meant, I now have a better understanding what it really means to me. We have an absolute obligation to tell our children, from generation to generation how wonderful it is to be Jewish.

*Bob Peterman.*

President BENT

## Voice of the Men's Club

By Neal Plotkin & Rodney Ugent,  
Co-Presidents



The Men's Club wishes to thank Rabbi Crystal, Hazzan Berke and the choir for their outstanding High Holidays presentation. The service was enjoyed by the entire congregation and guests. Special thanks to the Men's Club, Sisterhood and Board Members who volunteered to be greeters to the congregation. The Men's Club was very proud to distribute our new La Shana Tova New Year's Greeting Book. Please thank Kevin and Chad Nashban for volunteering to put the book together this year. Please support our advertisers. We also thank our congregation members who placed New Year's greetings in the book. If you have not received your book yet, please contact the synagogue office.

Isn't it great to have the Brewers playing baseball in October? Our synagogue will be operating a stand during the playoffs and World Series. This season the volunteers will have made more than \$4,000.00 to be used for the synagogue. Our earnings have purchased a high speed printer and supplies for the office, the automatic handicap entrance doors and a professional carpet cleaning machine. Brewer volunteers will be getting together in November to enjoy a delicious dinner using our tip money.

The Men's Club needs volunteers to help erect the Sukkah on Sunday, October 9, at 10:00 am. If we have enough volunteers we will be finished by noon, so we encourage parents whose children are in school to help.

Our next Beer & Bible Dinner with Rabbi Crystal, will be on Monday, October 17, at 6:00 pm, with a delicious dinner cooked by Chef Eugene and the Gang. The Rabbi always presents a very interesting and thoughtful topic for discussion. All this, great friendship and discussion, for only \$5.00.

Please, if you have not renewed your Men's Club membership, fill out the dues form to the right of this article and return it to the synagogue. Your membership and participation is important for us to continuously present quality programs for all.

***Your participation in Beth El Ner Tamid Men's Club events is always welcome and appreciated. Join US!***

*Neal Plotkin & Rodney Ugent*

Men's Club Co-Presidents

### MEN'S CLUB OCTOBER SCHEDULE

**Sunday, October 9th, at 10:00 am**

Men's Club will build the Sukkah

**Monday, October 17th, at 6:00 pm**

Men's Club "Beer & Bible" with Rabbi Crystal in the Sukkah

**MARK YOUR CALENDARS**

**For The Men's Club**

**Paid-Up Membership Dinner**

**on Thursday, November 17th, at 6:30 pm**

## BETH EL NER TAMID MEN'S CLUB 2011-2012 Membership Invitation Dues Statement for September 2011-September 2012



**Dear Congregant:**

This is your official invitation. We want you to join Beth El Ner Tamid Men's Club, an award-winning affiliate of the Federation of Jewish Men's Clubs!

Our Club represents a multi-generational group of guys in their 30's and up who bring you great programming and camaraderie. Beth El Men's Club functions as a support mechanism to our congregation by providing services and activities for our members. Just look at some of the things we do:

*Monthly dinner and study sessions with the Rabbi*

*Combined Men's Club/Sisterhood programs*

*Sunday breakfasts- Minyanaires*

*Men's Club Kallah weekend & Retreats*

*Paid-up member dinners*

*Yom Hashoah programs & candles*

*Baseball/basketball outings & bike rides*

*Fundraising ~ World Wide Wrap*

*Sunday morning guest speakers*

*Computer/Internet activities*

*Man of the Year Dinner*

*Sukkah setup ~ Chanukah party*

*Purim Carnival ~ Scholarships for high school graduates*

*Barbeques ~ Shalach Manot gift baskets*

**-AND SO MUCH MORE-**

**For only \$36.00, you can actively participate  
in the good times and do a mitzvah.**

Please mail your check with the form below to Beth El Ner Tamid Synagogue, Men's Club, 2909 West Mequon Road, Mequon, WI 53092. If you have any questions, you can reach me at (414) 351-4714 or e-mail me at rddugent@aol.com

Sincerely yours,  
Rodney Ugent,  
Co-President/VP Membership

### **Yes! Count me in.**

I want to be a member of this important part of our congregation.

Membership Renewal (\$36.00)

New Member (\$36.00)

Contact me about further involvement

Name \_\_\_\_\_

Address \_\_\_\_\_

City \_\_\_\_\_

State \_\_\_\_\_ Zip Code \_\_\_\_\_

Home Phone \_\_\_\_\_

Work Phone \_\_\_\_\_

E-Mail \_\_\_\_\_

## Voice of the Sisterhood

By Phyllis Wiggins, President

### Happy "holy" days?



This is the time of year when we wish each other a happy and healthy holiday. We dress in our finest and come to synagogue to sit and pray, visit with family and friends, and catch up on community business. We laugh and talk with those we love and adore. We donate to charities and talk of how things are going in the world. Do we, however, stop to truly consider those who are not able to come to our community gatherings and family dinners?

I often sit and wonder, while daydreaming through the service (yes, I admit it. I daydream!), about those who cannot make it for the high holidays. What do we do to make sure they feel included? Do we visit the homes and let a stranger know we thought of them this season? Do we invite a single person or family in need to share our meal? Do we go out and do more than throw our money at a social issue?

Some of us do but many of us don't take the time to truly consider those who cannot adorn their best and come to shul. We have to ask ourselves what is a holiday? Is it a time to celebrate and laugh and talk or is it a "holy" day—a day of reverence and devotion to humanity? Is it both? Is it neither?

I know, I'm asking lots of questions and I'm not offering any answers. Well, that's because the answers are personal. Just as your faith-based practice is personal so are the ways in which you participate in the high holidays. There is no right way to do this. You simply have to search your soul and decide what is important to you during these days of worship, friendship, and reflection.

I just offer this: take a moment to ponder what the holidays mean for you. What did they mean when you were a child? Were they magical days of happiness, food, and relatives? Were they somber days of prayer, worship, and reflection? Were they times of new clothes or times of community service? Take the time to remember.

Then, take the time to create! Create a holiday that has meaning for you. Talk to your children about what the holidays are meant to be in your family. Donate to your synagogue, favorite charity, or local family in need. Invite a stranger (that new family or single person in your neighborhood who will be alone) to eat dinner with you and your family. Come celebrate and worship with your synagogue family and friends.

Don't let this holiday just be a day of food and obligatory synagogue attendance. When I converted, a rabbi told me I should not do things that don't have personal meaning for me. I try very hard to live by that concept. I research practices and traditions and try to create meaning in the

*Voice of the Sisterhood continued next column*

## BETH EL NER TAMID SYNAGOGUE JUDAICA BOUTIQUE

### Gift Certificates Available

Start Traditions... *Sabbath Candlesticks*  
*Menorahs* ♪ *Seder Plates* ♪ *Bride's Bibles*  
*Mezuzot* ♪ *Shofars* ♪ *Tallitot*

### GIFT SHOP HOURS

**Sunday: 10:00 am to 12:00 noon**

**Thursday: 4:00 pm to 6:00 pm**

**Or By Appointment**

**Please call:** Ydelle Litwack (414) 510-4677  
Deanna Spanjar (262) 242-4336  
Ilene Wasserman (414) 228-8307

### SCHOLARSHIP FUND CARDS

(In Honor Of, In Memory Of, Speedy Recovery, Mazel Tov, etc.)

Chair: Ilse Eisendrath (414) 352-6406

### BEAUTIFICATION FUND CARDS

(In Honor Of, In Memory Of, Speedy Recovery, Mazel Tov, etc.)

Chair: Ruth Hauser (414) 962-5102

### TORAH FUND CARDS

(In Honor Of, In Memory Of, Speedy Recovery, Mazel Tov, etc.)

Chair: Marlene Loeb (414) 352-5632

## MARK YOUR CALENDARS

For the Sisterhood

**Paid-up Membership Luncheon  
on Sunday, November 20th, at 11:00 am**

### SISTERHOOD OCTOBER SCHEDULE

**Monday, October 3rd, at 11:00 am**—The Sisterhood Perspectives Program will feature our own Ava Bortin. Ava will be discussing 'Wills.' Please bring a brown bag lunch, dairy or pareve only (no meat). The monthly meeting will follow.

**Thursday, October 6th, from 7:00 pm to 9:00 pm**—Come to Mah Jongg Night at BENT. Bring friends or we will find a table for you. The cost is only \$1.00 per person. All are welcome.

*Voice of the Sisterhood continued*

ways I celebrate, pray, and do mitzvot. I suggest, this holiday, you do the same!

I challenge you to find meaning in the things you've always done! I invite you to create a new tradition or revive an old one. I dare you to share your tradition with someone young or new to the congregation or community. I ask you to come out and support your synagogue.

Be more than just a chair warmer this holiday. Put your heart and soul into participating in the high "holy" days! Strive to make this a season of joy, reflection, renewal, and dedication. **See you in Shul! L'Shana Tovah!**

Respectfully submitted,  
**Phyllis-Marie Wiggins,**  
Sisterhood President, 2010-2012

**DONNA'S BOOK REVIEW****THE SACRIFICE OF TAMAR by Naomi Ragen**

From the author of "Jephte's Daughter and Sotah comes "The Sacrifice of Tamar, a powerful novel that examines with unflinching honesty the dark heart of racism and the surprising capacity of the human spirit to soar above its sordid consequences.

Tamar Finegold is 21 years old, a happy, chaste young bride in one of Brooklyn's insulated ultra-Orthodox enclaves, a community not unlike Crown Heights. As the wife of a rising young Rabbi and Talmud scholar, her status is assured, and she commands the respect and envy of her neighbors and friends. This staid, predictable life is brought to an abrupt end when she is raped by a black man who enters the apartment where Tamar is caring for her sister's baby. Rather than risk the unbearable stigma that would result from telling the truth, a stigma Tamar fears would not only destroy her standing in the community but her marriage as well, she silently hides her shame, finding solace in her unsuspecting husband's loving arms. However, Tamar's confused, expedient decision explodes into an incalculable moral dilemma when she discovers she is pregnant and cannot be sure who the father is.

Faced with impossible choices, she turns for help to the two best friends of her childhood: Hadassah, the beautiful, wayward daughter of the great Kovnitzer Rabbi; and intelligent, worldly Jenny, whose widowed mother sent her to a girl's yeshiva simply to avoid public school. Together the 3 friends relive past struggles with issues of moral choice, religious belief, racial tolerance and human kindness.

In the end, Tamar makes the only choice she can, praying that she will never be forced to face the consequences. And it seems as if her prayers have been answered until a shocking undreamed of turn of events brings her carefully balanced world crashing down, forcing her into a final, inevitable confrontation with the truth. It is a confrontation that will expand her narrow horizons, creating the need for heartbreaking sacrifices and allowing for the unexpected triumph of the human spirit.

I found this novel to be absorbing and read until 2 a.m. in the morning. I couldn't put this one down. I give this a 9 out of 10 rating. A great read and an interesting set of moral dilemmas.

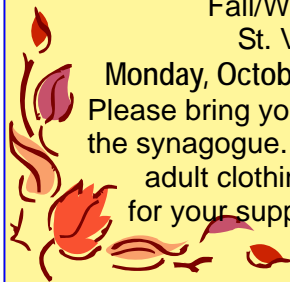
*Donna Neubauer, Book Club Chair  
Central Great Lakes Region  
Past President of Beth El Ner Tamid Synagogue Sisterhood  
Mequon, Wisconsin*

**Social Action Committee News****FALL/WINTER CLOTHING DRIVE**

The Social Action Committee is having a Fall/Winter Clothing Drive for St. Vincent de Paul from

Monday, October 3rd to Monday, October 31st.

Please bring your gently used clothing items to the synagogue. The drive is for children and adult clothing. Thanking you in advance for your support to this worthy cause. Boxes will be in the hall by the office.



Looking for more women (or men) to join Beth El's knitting group. If you don't know how to knit we will teach you how.

Just received lots of new yarn and knitting needles. We meet at the synagogue on **Sundays from 10:00 am to 12:00 noon.**

Knitters will always be notified during the week before we meet. If anybody has any yarn they are no longer using we would greatly appreciate you donating it to us. It does not have to be a full skein of yarn. Hope to see more of you join us.

Call Marge Kulakow, at (414) 540-6630, with any questions.

**PLEASE WATCH FOR WEEKLY ANNOUNCEMENTS & NEWSLETTERS AS WELL AS THE BULLETIN**

# Yoga Classes

with instructor  
**Jan Halonen**



**Yoga is a great stress reliever and enhances the immune system!**

**Classes are being held at  
Beth El Ner Tamid in the foyer  
on Mondays at 9:30 am.**

**The Cost is only \$11.00 per class**

For more information or to sign up please call Jan Halonen at (414) 915-6377

Flyers are in the foyer.

**NEED A RIDE?**

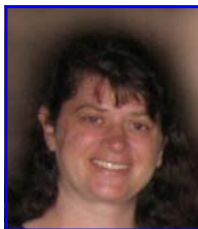
If you are in need of a ride to any of the synagogue functions, including Shabbat Service **OR** if you would like to give a ride...

Please call the Beth El office at (262) 242-6900.



## Family Education Center News

By **Debbie Intravaia**,  
Religious School Director



Dear congregants,

This year, our Israel studies will be a combined school gathering that was carefully planned out by Maggi Treager and myself. We are very excited to roll out our hands-on approach to learning about Israeli culture. We've invited our new Israeli emissaries to come and talk to the kids about the IDF and teach them some self defense techniques and talk about their own experiences with the army. Michal is our Shlichah and Roe'e is our Shaliach. How interesting it will be to have them share their knowledge from a female and male's perspective. We will also be doing some Israeli cooking which will incorporate a lot of new Hebrew words and sentences for the children. We've also asked Joyce Gutzke to come back for a few dance sessions and to tell some of her own personal stories about Israel. We will also be covering technology, the visual arts, music, statehood, peoples, and places. The list goes on, but I wanted to ask you for your help. We have two synagogue community projects that we would like everyone to take part in. The one we've currently started is asking everyone to be a part of our chain, and "link yourselves to Israel". Have you ever wanted to visit Israel? Have you ever gone to Israel? Do you know anyone who has ever gone to Israel? At Rosh HaShannah you may have picked up a copy of the project. We would like you to put your name on the female or male drawing, color it, then write something you love about Israel, submit by Sunday, October 9<sup>th</sup>, to Debbie Intravaia or Maggi Treager. It can be one or few words, such as "beautiful", "rich history", "land of discovery", "I love floating in the Dead Sea", "Masada is magnificent". If you include a picture, we will make a copy of it and put that on for you. We will then cut the figures out of the paper and making a long chain that will be displayed in the building. As you can see, you can have a love for Israel without actually visiting; we are all linked to Israel in some way. We hope that you will show your community support and help us with our chain.....

L'hitraot,

**Debbie Intravaia**,  
Religious School Director

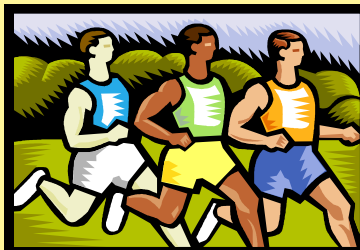
*If you know someone who is looking for a wonderful Jewish education experience for their child(ren), please bring them one of our colored brochures and have them call our Religious School Director, Debbie Intravaia at (920) 451-8654.*

*Or they can e-mail Debbie at [pasta963@att.net](mailto:pasta963@att.net)*

**Join Family, Friends & Neighbors For  
Beth El Ner Tamid's Eleventh Annual**

# FUN RUN/WALK

**Sunday, October 30th,  
at 9:30 am**



**Cost is  
\$18.00**

**This includes a  
commemorative  
tee shirt**

(Tee shirt sizes are guaranteed only if registration is received by **Monday, October 10th.**)

**Become a sponsor for only \$36.00!**

**All proceeds will help our  
Family Education Center!**

Brochures are on our website at  
[www.bethelnertamid.org](http://www.bethelnertamid.org)  
or throughout the synagogue.

## **Wish List For Beth El**

**8 sets of Headphones or Ear Buds  
for computer use in our school**

Please contact Donna Brown at (262) 242-6900  
or [donnabrown@wi.rr.com](mailto:donnabrown@wi.rr.com)

**The Entire Beth El Community  
Is Invited For A**

**BLESSING OF THE ANIMALS CEREMONY**

**in honor of Parsha Noah  
on Sunday, October 23rd, at 12:00 pm**

Bring your pet, leashed or caged, to the back porch area of the synagogue. You may also bring a stuffed animal or a picture of your pet.  
No reservations needed.

If you have any questions,  
please contact Rabbi Crystal  
at (262) 242-6900.



# 2011 MEN'S CLUB TAILGATE PARTY



Beth El's Men's Club sponsored the Midwest Region Tailgate Party with the Brewers vs. the Cubs on Sunday, August 28th. The food was delicious, the weather beautiful and the game exciting; making this a great day for all who attended.

## ADVERTISE WITH BETH EL

*Let us help you promote your business!*

**SPECIAL** Buy a 5 month ad and get 1 FREE!  
Buy a 10 month ad and get 2 FREE!

The cost is only \$36 per month  
for a business-card sized ad (3 1/2" X 2" )

(The same size as this ad)

Send your camera ready artwork to  
info@bethelnertamid.org

attention Judy Taylor. Or bring or mail your  
business card to the Beth El Office at:  
2909 W. Mequon Road, Mequon, WI 53092  
Please send your payment with artwork.

## Beth El is on Facebook

If you have a Facebook account, why not "like" us.  
We use Facebook to update our friends on  
Men's Club, Sisterhood and School activities  
happening here at Beth El.

Getting to our Facebook page is easy.

Go to our website at

www.bethelnertamid.org and click on the  
on the left side or the middle of the page.



## WHEATON FRANCISCAN HOME HEALTH CARE FLU SHOT CLINIC

Beth El will host the  
Wheaton Franciscan Home Health Care  
Flu Shot Clinic on  
**Sunday, October 2nd**  
from 10:30 am to 1:00 pm

**OPEN TO THE PUBLIC!**

Seniors, please bring your Medicare or  
Medicare Advantage card.  
Please feel free to contact Barbara Simon at  
(414) 351-1010 or bsimon@wi.rr.com  
for more information.

## TREE OF LIFE DEDICATION

A Gold Leaf was dedicated  
in honor of the Bar Mitzvah of

**Zachary Wahrman**

on May 21st, 2011

*Harlan, Joan & Connor Wahrman*



## MARK YOUR CALENDARS

*for the next*

**Friday Night Shabbat Dinner**  
**on November 4th, at 6:15 pm**

Shabbat service will follow at 7:30 pm.  
More information to follow.

## JEWISH MUSEUM MILWAUKEE

**"Mildred Fish Harnack:**

**The Story of a Wisconsin Woman's Resistance"**

Mildred was born in Milwaukee. She moved to  
Germany and because of her involvement with the  
resistance movement was jailed and then executed  
by orders of Adolf Hitler. Come and learn this fasci-  
nating story of personal courage and the difference  
one individual can make by standing up in the  
face of adversity.

**This exhibit runs through November 27th**

For further information please call the  
Jewish Museum Milwaukee at (414) 390-5730 or  
go online to www.jewishmuseummilwaukee.org


**BIRTHDAYS**


Carol Dubin-Bookstaff	October 2nd, 2011
Joan Wahrman	October 2nd, 2011
Harlan Wahrman	October 3rd, 2011
Andrea Bootzin	October 4th, 2011
Donald Chudnow	October 4th, 2011
Eleanor Goodwin	October 4th, 2011
Scott Litow	October 4th, 2011
Ilse Eisendrath	October 5th, 2011
Bess Erens	October 5th, 2011
Sarie Shainock	October 5th, 2011
Judith Levin	October 7th, 2011
Harriet Blumberg	October 9th, 2011
Patricia Chamoy	October 10th, 2011
Erica Gordon	October 11th, 2011
Arielle Winter	October 12th, 2011
Nate Rudman	October 13th, 2011
Eli Gecht	October 16th, 2011
Marci Tanz	October 16th, 2011
Beverly Moeckler	October 19th, 2011
Donna Neubauer	October 19th, 2011
Sheila Smith	October 20th, 2011
Gary Cohen	October 21st, 2011
Goldi Miller	October 22nd, 2011
Isadore Sand	October 23rd, 2011
Anita Blumberg	October 25th, 2011
Rick Intravaia	October 25th, 2011
Leigh Appelbaum	October 26th, 2011
Edward Blumberg	October 27th, 2011
Barbara Friedman	October 28th, 2011
Hans Hauser	October 28th, 2011
Milton Stein	October 28th, 2011
Elizabeth Gutterman	October 30th, 2011
Aimee Bachar	October 31st, 2011
Flora Cohen	October 31st, 2011


**ANNIVERSARIES**

**Harlan & Joan Wahrman**

October 9th, 2011 ~ 23rd Anniversary

**Fred & Jane Chester**

October 16th, 2011 ~ 56th Anniversary

**Harvey & Glenda Kaufman**

October 16th, 2011 ~ 40th Anniversary

**Lawrence Stewart & Amy Ginsberg**

October 21st, 2011 ~ 21st Anniversary

**Jeffrey & Ilene Wasserman**

October 21st, 2011 ~ 38th Anniversary

**Al & Barbara Simon**

October 23rd, 2011 ~ 51st Anniversary

**Robert & Beth Peterman**

October 27th, 2011 ~ 20th Anniversary

**Entertainment Books Are At Beth El!****Give the Gift of Entertainment**

They make great presents for birthdays, anniversaries or thank-you gifts. It is the gift that keeps on giving plus you will be supporting our synagogue.

The cost is only \$35.00.

Contact the BENT office at  
(262) 242-6900 or Kevin Nashban at  
(414) 352-1242 to reserve your copy.



**Celebrate a birthday, wedding anniversary or special simcha...**

**Sponsor a Kiddush!**

Sponsoring a Kiddush is a wonderful way to celebrate a special event in you and your family's lives. Your special event will be featured in the Saturday program and acknowledged from the Bimah. For further information, please contact Donna Brown at the Synagogue office (262) 242-6900 or [executivedirector@bethelnertamid.org](mailto:executivedirector@bethelnertamid.org)

**TREE OF LIFE**

A gift of a leaf on the Tree of Life is a gift that lasts forever. Why not remember that bar or bat mitzvah, the special anniversary, birthday or any other family simcha with a dedication to the Tree of Life?

Please contact Fred Meyer at  
(414) 351-4556 for more information.

**The Synagogue and Sisterhood accept****Visa and MasterCard**

You can charge dues, synagogue events (such as concerts and dinners) and items purchased in the Sisterhood Gift Shop.

**Support Our Synagogue**

Marcus Theater Certificates are available for purchase in the synagogue office.



They make wonderful gifts and are a great way to support our synagogue! Certificates are available in the amounts of \$5.00 and \$10.00. Call the office at (262) 242-6900 for more information.

**SHOP SENDIK'S! SUPPORT BENT!****Sendik's Scrip is available at BENT!**

Cards can be purchased for cash or check in amounts of \$50 or \$100. For more information or to order cards, please call the office at (262) 242-6900. Sorry no charges.

# YAHREZEITS FOR AUGUST THROUGH SEPTEMBER

"BECAUSE OF CHARITY THE WORLD ABIDES..." RASHI, PIRKEI AVOT

Jean Bander, beloved sister of William Stern  
 Donald Berman, beloved husband of Ruth Berman  
 Robert Biller, beloved father of Dorie Sand  
 Rose Bistriz, beloved mother of Dorothy Sattler  
 Joseph Chudnow, beloved father of Donald Chudnow  
 Rose Cohen, beloved mother-in-law of Flora Cohen  
 Sam Dapin, beloved father of Eva Bard  
 Sarah Dapin, beloved mother of Eva Bard  
 Frank Lederman, beloved father-in-law of Ann Lederman  
 Warren Lederman, beloved husband of Ann Lederman  
 Barnett Medress, beloved father of Sylvia Spiegel  
 Pauline Medress, beloved mother of Sylvia Spiegel  
 Selma Pressman, beloved mother of Sherri Beder  
 Martin Reider, beloved husband of Phyllis Reider  
 Meyer Safer, beloved father of Marge Kulakow  
 Samuel Shapiro, beloved father of Jeanette Rozansky  
 Anna Sher, beloved mother-in-law of Helen Sher  
 Julius Sher, beloved father-in-law of Helen Sher  
 Martha Siegman, beloved mother of Eleanor Goodwin

Uriel John Spiegel, beloved husband of Sylvia Spiegel  
 Ben Stein, beloved father of Milton Stein  
 Charles Stern, beloved brother of William Stern  
 David Stern, beloved brother of William Stern  
 Dora Stern, beloved mother of William Stern  
 Eric Stern, beloved grandson of William Stern  
 Henry Stern, beloved brother of William Stern  
 Jack Stern, beloved brother of William Stern  
 Louis Stern, beloved brother of William Stern  
 Oscar Stern, beloved brother of William Stern  
 Sam Stern, beloved father of William Stern  
 Yetta Stern, beloved wife of William Stern  
 George Stone, beloved father of Phyllis Reider  
 Jack Walchok, beloved uncle of Harleene Hoffman  
 Molly Weiner, beloved mother of Mickey Lerner  
 Morris Weiner, beloved father of Mickey Lerner  
 Ida Zbar, beloved mother-in-law of William Stern  
 Louis Zbar, beloved father-in-law of William Stern

## IN MEMORIAM

The community of Beth El Ner Tamid  
 mourns the passing of

Stephen Axel

Beloved cousin of Fred and Jane Chester

May all be comforted by the thoughts and  
 prayers of friends and family.

## MEMORIAL PLAQUE INFORMATION

Numerous congregants have found that the most appropriate and dignified manner to honor and perpetuate the cherished memory of their beloved departed is through providing a bronze memorial plaque to be mounted upon the synagogue's memorial tablet. Memorial lights are kindled at each memorial plaque during every yizkor service and on each respective yahrzeit.

The cost per plaque is \$250.00.

Please contact Rabbi Crystal at (262) 242-6900  
 or Fred Meyer at (414) 351-4556 for further information.

## FUND CARDS for August through September

### JACK & MURIEL ABRAMS ENDOWMENT FUND:

#### Get Well:

Harold Rozansky

Shirley Langer

#### In Honor Of:

Aaron & Ruth Leff (65th Anniversary)

Shirley Langer

Mark & Arlene Litow (Micah, Scott  
 & Casey Litow's Graduations)

Shirley Langer

### GENERAL FUND:

#### In Memory Of:

Abe Berkovitz

Morris & Lorraine Klein

Roxanne Kahn (Beloved Mother)

Sandra Kahn

Don Schaum

Sandy Kaner

Milton Sogol

Dan, Judy & Annie Ruth Bellenger

Morris & Lorraine Klein

### KIESL & YETTA KAUFMAN MUSIC FUND:

#### Get Well:

Dr. Kiesel Kaufman

Jerry & Selma Shlensky

### SISTERHOOD TORAH FUND:

#### In Honor Of:

Theodore Pittelman

Norman & Ann Esser

#### In Memory Of:

Julius Atkins

Norman & Ann Esser

Dr. Jerry Zussman

Mark & Barbara Pollack

### SOCIAL ACTION FUND:

#### In Honor Of:

Flora Abramson (80th Birthday)

Al & Barbara Simon

Al & Barbara Simon  
 (New Granddaughter)

Shirley Langer

#### In Memory Of:

Abe Berkovitz

Morris & Lorraine Klein

Reverend Itzhak Goldenholz

Al & Barbara Simon

## WANT TO MAKE A CONTRIBUTION TO ONE OF OUR FUNDS?

Contact **Marge Kulakow** by phone at **(414) 540-6630**

Or send a check to Marge:

**4195 W. Bradley Rd., #311, Brown Deer, WI 53209**



# Beth El Ner Tamid Synagogue

Elul 5771 Tishri 5772 September & October 2011

## HIGH HOLY DAYS ~ SCHEDULE OF SERVICES

### ROSH HASHANAH

#### Wednesday, September 28

Erev Rosh Hashanah Service ..... 8:00 pm

#### Thursday, September 29

Shacharit ..... 9:00 am

Junior Congregation Service\* ..... 10:30 am

Tashlich ..... 5:45 pm

Evening Service ..... 6:15 pm

#### Friday, September 30

Shacharit ..... 9:00 am

### SHABBAT SHUVAH

#### Friday, September 30

Kabbalat Shabbat Service ..... 7:30 pm

#### Saturday, October 1

Shacharit ..... 9:30 am

### YOM KIPPUR/SHABBAT

#### Friday, October 7

Kol Nidre Service ..... 6:00 pm

Junior Congregation Service\* ..... 7:00 pm

#### Saturday, October 8

Shacharit ..... 9:00 am

Junior Congregation Service\* ..... 10:30 am

Yizkor ..... 11:00 am

Mincha ..... 5:15 pm

N'eilah Service ..... 6:00 pm

Havdalah/Shofar & Break Fast ..... 7:06 pm

### SUKKOT

#### Thursday, October 13

Shacharit ..... 9:30 am

#### Friday, October 14

Shacharit ..... 9:30 am

### SHABBAT HOL HA MOED SUKKOT

#### Friday, October 14

Kabbalat Shabbat Service ..... 7:30 pm

#### Saturday, October 15

Shacharit ..... 9:30 am

### SHEMINI ATZERET

#### Thursday, October 20

Shacharit/Yizkor ..... 9:30 am

### SIMCHAT TORAH

#### Thursday, October 20

Consecration & Gala Celebration Service ... 6:45 pm

#### Friday, October 21

Shacharit ..... 9:30 am

*For security reasons, no one will be admitted to the High Holiday service unless they have a High Holiday ticket.*

Please note: all times are approximate

\*Ages 8 and up (Children under 8 must be accompanied by a parent)



TISHREI - CHESHVAN 5772

OCTOBER 2011

BETH EL NER TAMID SYNAGOGUE

09/19/11 DMB

SI-Sisterhood MC-Men's Club

RS-Religious School

EOC-Expenditure Oversight Committee

BOT-Board of Trustees

Sunday	Monday	Tuesday	Wednesday	Thursday	Friday	Saturday
<b>4 Tishrei</b> ii 7:01 PM <b>FAST OF GEDALIAH</b> <b>9:00 AM RS</b> 10:30 AM Flu Shot Clinic	<b>5 Tishrei</b> 7:30 AM Minyan 11:00 AM SI Meeting	<b>6 Tishrei</b> 7:30 AM Minyan 11:00 AM SI Meeting	<b>7 Tishrei</b> 7:00 PM EOC Meeting 7:30 PM Choir Practice	<b>8 Tishrei</b> 7:30 AM Minyan <b>4:30 PM RS</b> 7:00 PM Mah Jongg	<b>9 Tishrei</b> ii 6:06 PM Office Closes 1:00 PM 7:30 AM Minyan <b>EREV YOM KIPPUR</b> 6:00 PM Kol Nidre Svc 7:00 PM Jr. Cong Svc	<b>10 Tishrei</b> ii 7:04 PM <b>YOM KIPPUR YIZKOR</b> 9:00 AM Shacharit <b>10:30 AM Jr. Cong Svc</b> 11:00 AM Yizkor 5:15 PM Mincha 6:00 PM N'eilah Svc 7:06 PM Haydalah / Shofar and Break the Fast
<b>11 Tishrei</b> <b>9:00 AM RS</b> 10:00 AM MC – Build Succah	<b>12 Tishrei</b> COLUMBUS DAY Office Closed 7:30 AM Minyan	<b>13 Tishrei</b> 7:30 PM BOT Meeting	<b>14 Tishrei</b> ii 5:57 PM Office Closes 1:00 PM <b>EREV SUKKOT</b>	<b>15 Tishrei</b> ii 6:56 PM Office Closed <b>SUKKOT I NO RS</b> 9:30 AM Shacharit	<b>16 Tishrei</b> ii 5:54 PM Office Closed <b>SUKKOT II</b> 9:30 AM Shacharit <b>SHABBAT HOL HA MOED SUKKOT</b> 7:30 PM Kabbalat Shabbat Service	<b>17 Tishrei</b> <b>SUKKOT III</b> <b>SHABBAT HOL HA MOED SUKKOT</b> 9:30 AM Shacharit Haydalah in the succah with Choir
<b>18 Tishrei</b> <b>SUKKOT IV</b> 9:00 AM RS	<b>19 Tishrei</b> <b>SUKKOT V</b> 7:30 AM Minyan 6:00 PM MC Beer & Bible in Succah	<b>20 Tishrei</b> <b>SUKKOT VI</b>	<b>21 Tishrei</b> Office Closes 1:00 PM <b>EREV SHEMINI ATZERET</b>	<b>22 Tishrei</b> ii 6:45 PM Office Closed <b>SHEMINI ATZERET YIZKOR</b> <b>NO RS</b> 9:30 AM Shacharit/Yizkor <b>6:45 PM Consecration and Gala Celebration Service</b>	<b>23 Tishrei</b> ii 5:42 PM Office Closed <b>SIMCHAT TORAH</b> 9:30 AM Shacharit	<b>24 Tishrei</b> 9:30 AM Worship Svc
<b>25 Tishrei</b> <b>9:00 AM RS</b> 12:00 PM Blessing of the Animals	<b>26 Tishrei</b> 7:30 AM Minyan	<b>27 Tishrei</b>	<b>28 Tishrei</b> 7:30 AM Minyan <b>NO RS</b>	<b>29 Tishrei</b> ii 5:32 PM Office Closes 1:00 PM <b>NO RS</b>	<b>30 Tishrei</b> ii 5:32 PM Office Closes 1:00 PM	<b>1 Cheshvan</b> 9:30 AM Worship Svc
<b>2 Cheshvan</b> <b>9:00 AM RS</b> <b>9:30 AM Run/Walk</b>	<b>3 Cheshvan</b> 7:30 AM Minyan	<b>25 Tishrei</b>	<b>26 Tishrei</b>	<b>27 Tishrei</b>	<b>28 Tishrei</b>	<b>29 Tishrei</b>

Phone: (262) 242-6900 E-mail: info@bethelnertamid.org

Find out about more Beth El events or any last minute updates, visit our website at www.bethelnertamid.org



**Beth El Ner Tamid Synagogue**  
**2909 W. Mequon Road**  
**Mequon, WI 53092**

*Robert Peterman, President*  
*Ava Bortin, Vice President*  
*Ilene Wasserman, Secretary*  
*Jane Chester, Treasurer*  
*Barbara Abrams, BOT*  
*Patricia Chamoy, BOT*  
*David Gutterman, BOT*  
*Harvey Kaufman, BOT*  
*David Kazilsky, BOT*  
*Alan Marcuvitz, BOT*  
*Robert Rudman, BOT*  
*Albert Simon, BOT*  
*Rodney Ugent, BOT*  
*Glenn Yamahiro, BOT*  
*Jaclyn Zigan, BOT*  
*Neal Plotkin, MC President*  
*Phyllis Wiggins, SI President*

# **BETH EL PICTURE GALLERY**

## **FRIDAY NIGHT SHABBAT DINNER**



Everyone had a great time at Beth El's Friday Night Shabbat Dinner held on September 9th. Thank you to all who attended. A special 'thank you' to Marge Kulakow, Bess Lerner, Janice Meyer, Donna Neubauer, Phyllis Reider, Thelma Sogol, Deanna Spanjar, Ilene Wasserman and Phyllis Wiggins, for cooking a delicious meal, setting up and decorating Weitzman Hall. It was lovely. Photos taken by Sandy Kaner.